



# RSD ENTERPRISES



RSD has a long-standing commitment to creating responsible infrastructure. Sustainability is an integral part of our approach to business and work practices.

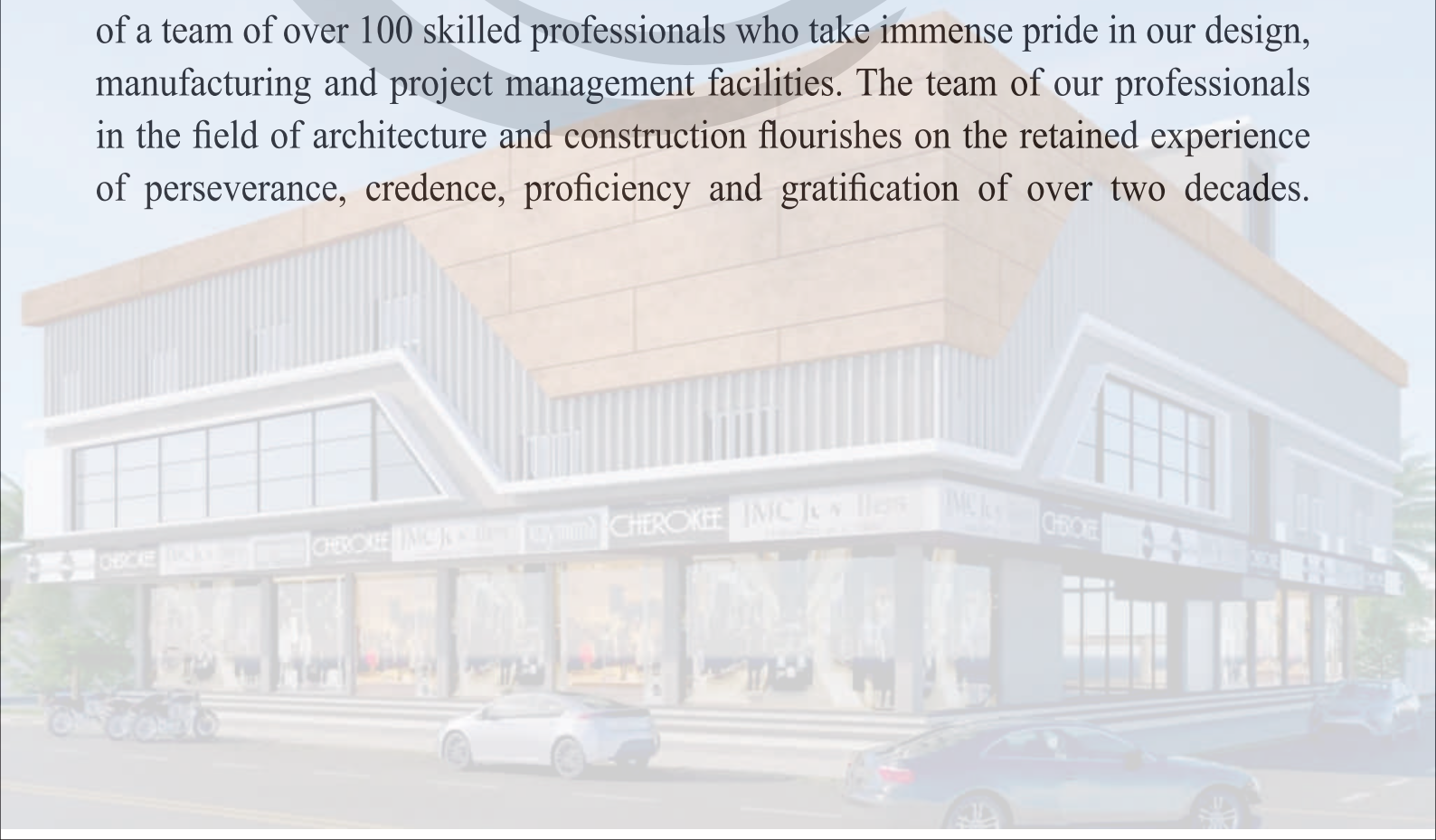
Interior & exterior Decorator Contractor



## ||| ABOUT US

RSD was established with the goal of combining creativity and pragmatism to yield compelling innovations through comprehensive solutions for architectural developmental needs. With an acquired experience of 12 years, RSD offers professional services for design, engineering, material procurement and application, quality control and construction.

Our team of professionals works timelessly to offer innovative problem solving techniques to help clients turn their visions into reality. RSD comprises of a team of over 100 skilled professionals who take immense pride in our design, manufacturing and project management facilities. The team of our professionals in the field of architecture and construction flourishes on the retained experience of perseverance, credence, proficiency and gratification of over two decades.





## VISION

RSD envisions to up-hold the stature of being recognized as India's leading architectural vision through a combination of socio-economic growth and associate satisfaction.

## MANTRA

RSD functions on the mantra of judicious advancement and generation of maximum customer satisfaction in the field of architectural design.

## MISSION

RESD thrives to be the first established company of choice and growth through innovation ensuring environmental protection by delivering quality and time architectural solutions.





## RANGE OF PRODUCTS

### Aluminum Composite Panel Cladding (ACP)

ACP primarily uses low density polyethylene the core of which is laminated between two high strength coil coated aluminum sheets. ACP sheets can be easily fabricated (cut, bent, curved, drilled, grooved, punched and shaped) using standard tools which suit the specific design requirements.



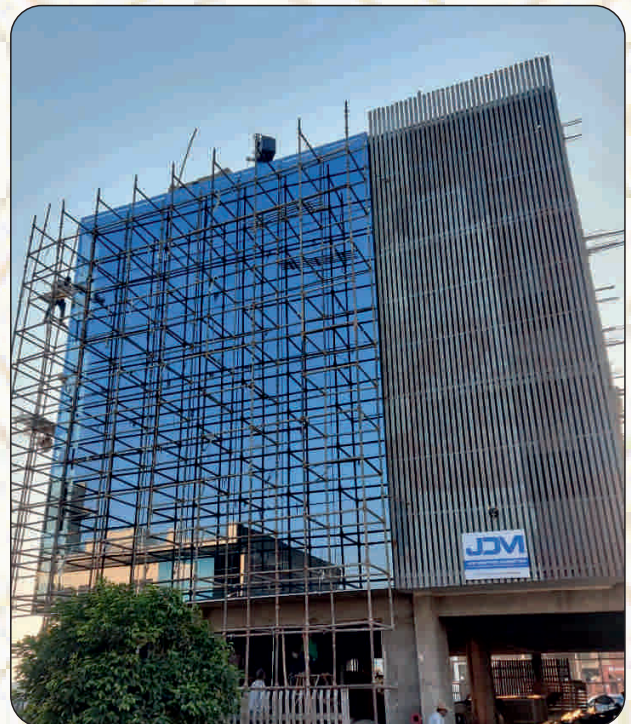




## RANGE OF PRODUCTS

### Structural Glazing

The installation of magnificent glass panels for the enhanced beautification of the constructed structure is structural glazing. Systems embracing spacers and adhesives are widely accepted glazing options utilized in- curtain wall, windows and store front installations. Universal Metal meets the market trend by offering adequately installed structural sealants which form continuous waterproof seal agents' leakage and air infiltration.





## RANGE OF PRODUCTS

### MS WORKS

MS Fabrication Work refers to the process of designing, manufacturing, and installing structures or components using Mild Steel (MS). It involves the fabrication of various metal structures, such as beams, columns, frames, stairs, platforms, and other customized metal products.







## RANGE OF PRODUCTS

### Toughened glass

Toughened glass is a type of safety glass that has been strengthened through controlled heat treatment. Toughened glass, also known as tempered glass, is created from annealed glass that has been heated to a very high temperature and then rapidly cooled, making it up to five times stronger than regular glass. Moreover, if the glass does indeed break, it will break into small, blunt, cube-shaped pieces due to stress patterns within the glass. In a nutshell, nobody gets hurt.



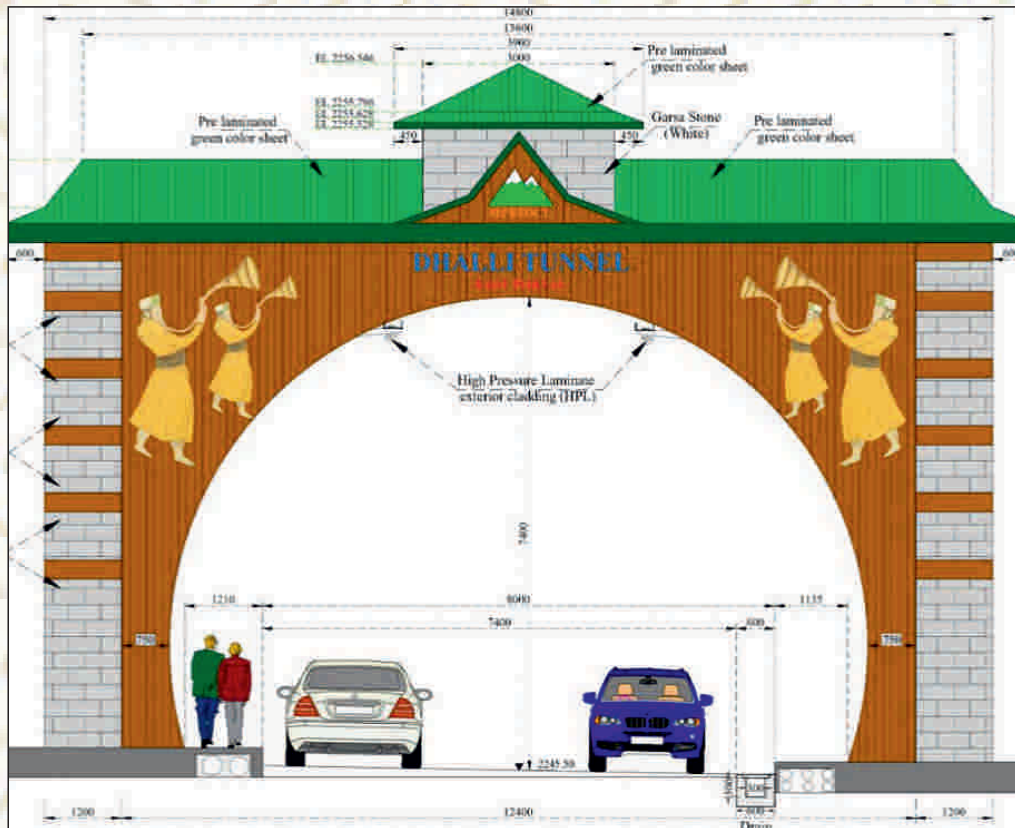




## Gallery



## Gallery



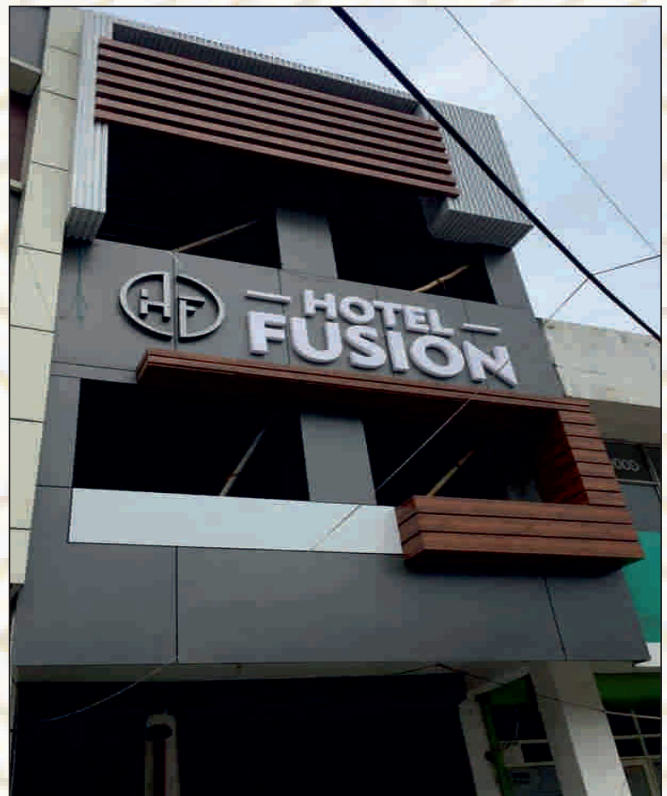




## RANGE OF PRODUCTS

### HPL Sheet

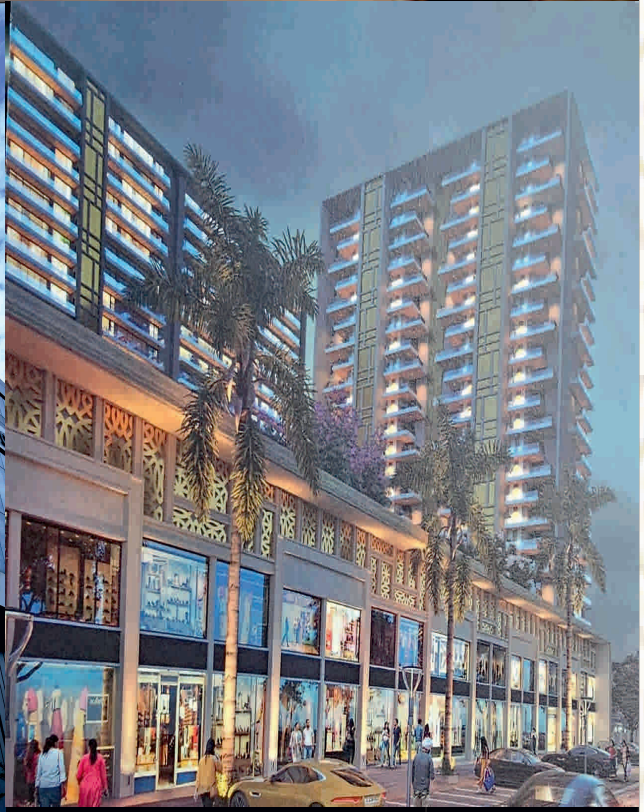
The HPL material is composite in nature. It is made with multiple layers of paper or fabric mixed with resilient thermosetting resins. This gives the HPL sheet its durability and strength. A decorative paper is then placed over the strong core layer. The colour and design of the decorative paper are what you see on the top of the HPL sheet. All of these layers are then bound together under high heat and pressure. Finally, a protective layer is applied to safeguard the laminate from potential damage caused by daily use, moisture, and fading due to prolonged exposure to environmental elements.





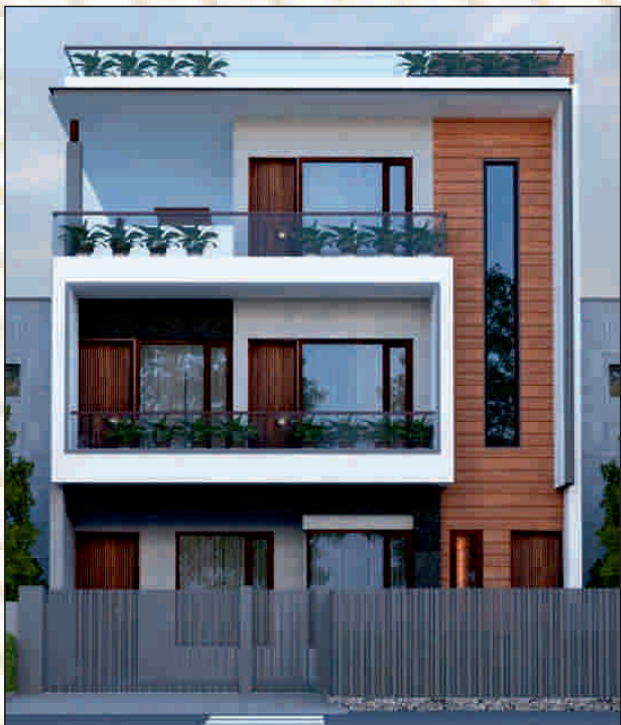


## Gallery





Gallery







## Gallery







## Gallery





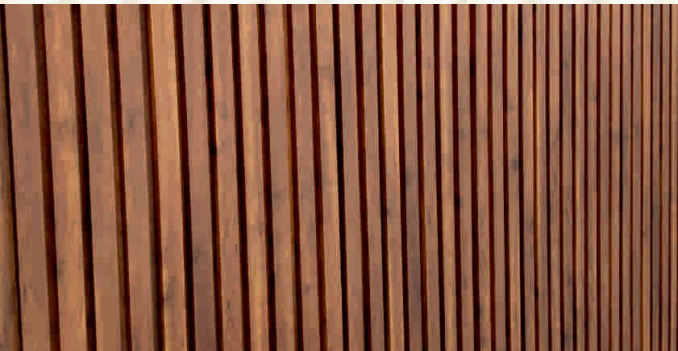
## Gallery







## Gallery









## **Safety Standards**

### **Design Wind Loading**

- Universal metal adopts wind loading safety measures in accordance with IS875 1987.

In case of non-existence of IS codes we abide to ASTM or BS standards.

### **Earthquake Loads**

- Universal metal adopts earthquake forces safety measures in accordance with IS-1893 1984 designing all anchors conservatively.

### **Deflection**

- Universal limits deflection of members to Span-175 to ensure maximum safety.





## Our Clients :



**TOREX**



MAYA GARDEN  
**MAGNESIA**  
MAGNITUDE OF GROWTH

**SAMSUNG**

**oppo**

**vivo**





Contact Us

Office.138, First Floor, Dashmesh Colony,  
Zirakpur, SAS Nagar, Punjab 140603



70174-74194



90129-04812